

Specifications

Power

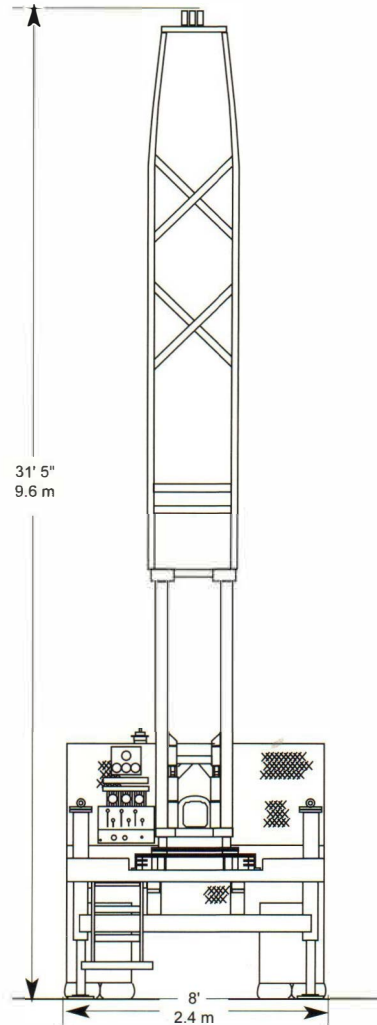
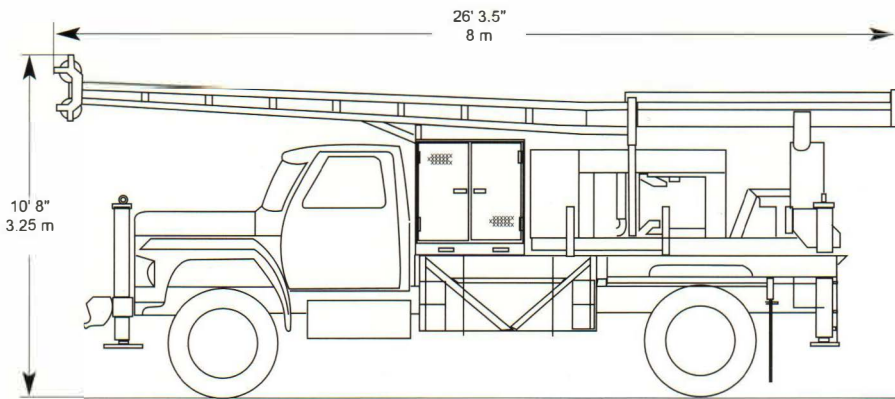
Cummins QSB 4.5L turbo charged Tier-4f diesel engine

Rotary Drive

Clutch, heavy duty.....13 in. (33 cm)
Transmission5 speed fwd., 1 speed rev.
Rotary torque10,445 ft. lbs. (14,160 Nm)
Rotary torque (optional).....13,225 ft. lbs. (17,930 Nm)
Rotary speed745 rpm max
Rotary speed (optional).....930 rpm max
Hollow spindle I.D.....2 3/4 in. (7 cm) {3 3/4 in.(9.5 cm) avail.}

Hydraulic Feed System

Retract force30,000 lbs. (13,608 Kg)
Pulldown force20,000 lbs. (9,072 Kg)
Retract rate (max)......95 ft./min. (29 m/min)
Feed rate (max)......52 ft./min. (16 m/min)
Stroke.....72 in. (1.8 m)



Typical single rear axle truck configuration with 26' mast and optional deck platform.

Dimensions will vary, depending on truck wheel base and all-wheel drive or tandem rear axle applications.

Central Mine Equipment Company manufactures a complete line of drilling equipment for the environmental, geotechnical and water well drilling industries of the world. We have been a leader in drilling product quality, innovation and service for over ninety years.



CENTRAL MINE EQUIPMENT COMPANY

4215 Rider Trail North, Earth City (St. Louis), Missouri, 63045 USA

Phone: 314-291-7700 • 1-800-325-8827 • FAX: 314-291-4880

E-mail: info@cmeco.com • Website: www.cmeco.com